

Configuring the Netgear Ready NAS 2100 for the GDC SR-1000 IMB

This document describes the steps for configuring the Netgear NAS as the content storage device for the GDC SR-1000 Standalone Integrated Media Block™ (GDC IMB).



To perform configuration changes on the GDC IMB, you must have Maintenance level permissions.

Affected products

These instructions apply to the following product.

- Netgear ReadyNAS 2100 (P/N: 111-589204-XX)

Prerequisites

The following components are required.

- GDC SR-1000 Standalone Integrated Media Block

Overview of configuration steps

Understand the required steps for connecting the Netgear NAS as a storage device for the GDC IMB.

- Set the Netgear NAS IP address to a different subnet than the GDC IMB. For more information, see [Changing the IP address of the Netgear NAS](#).
- Delete all Christie content files from the Netgear NAS. For more information, see [Deleting Christie content files](#).
- Configure the ETH1 port of the GDC IMB to an IP address compatible with the Netgear NAS. For more information, see [Configuring the ETH1 port on the GDC IMB](#).
- Configure the GDC IMB to use the Netgear NAS as a storage device. For more information, see [Configuring storage](#).

Changing the IP address of the Netgear NAS

Configure the Ethernet 1 IP address of the Netgear NAS to be on a different subnet than the GDC IMB. This example sets the IP address of the Netgear NAS to 10.10.10.101.

The Netgear NAS as default has Ethernet 1 set to DHCP and Ethernet 2 has an IP address of 192.168.100.100. The following steps assume you are starting with these default IP addresses.

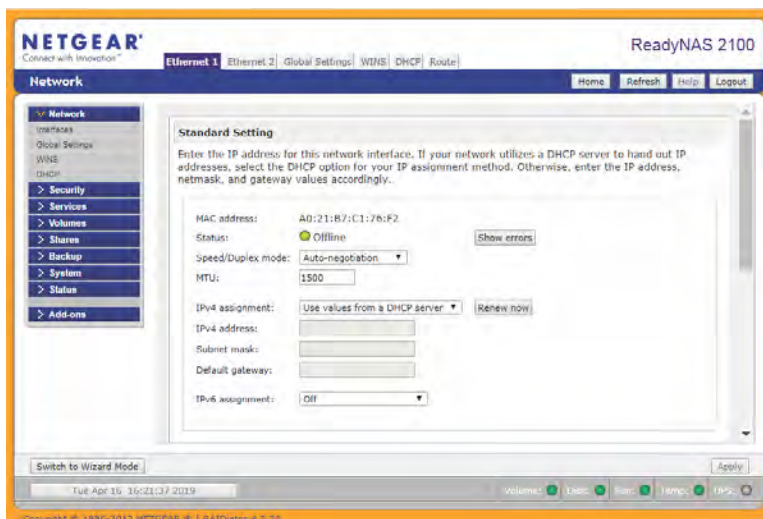
1. Connect an Ethernet cable from the Netgear NAS Ethernet 2 port to the computer.
2. Set the IP address of the computer.
The IP address of your computer must be different than the IP address of the Netgear NAS but must be on the same subnet. For example:

IP address	192.168.100.103
Subnet	255.255.255.0

3. Open a web browser and navigate to the Netgear NAS web interface at <http://192.168.100.100:8080/>.
4. Log into the Netgear NAS.

Default user ID	admin
Default password	admin

5. Go to **Network**.
6. On the Network page, click **Interfaces**.
The Ethernet 1 tab is displayed.



7. Select **Ethernet 1 > Standard Setting** and enter the following values:

Field Name	Value
IPv4 assignment	Use values below
IPv4 address	10.10.10.101
Subnet mask	255.255.255.0

Field Name	Value
Default gateway	10.10.10.1
IPv6 assignment	Off

8. In the IPv4 confirmation dialog, click **OK**.
9. To save the configuration, click **Apply**.
The IP address of Ethernet 1 port on the Netgear NAS is changed to 10.10.10.101.
10. To communicate with the Netgear NAS on its Ethernet 1 port, change the IP address of your computer to a compatible IP address on the same subnet. For example:

IP address	10.10.10.103
Subnet	255.255.255.0

11. To connect to the Netgear NAS web interface, use the address `http://10.10.10.101:8080/`.

Deleting Christie content files

Before using the Netgear NAS to store content for the GDC IMB, it is important to delete any pre-loaded files or content files previously ingested for use with the Christie IMB-S2.

Content files used by the Christie IMB-S2 are stored in the `/content/cinematlib` share folder. Use the Netgear NAS web interface to delete the `cinematlib` folder by temporarily connecting a computer to the Netgear NAS device.

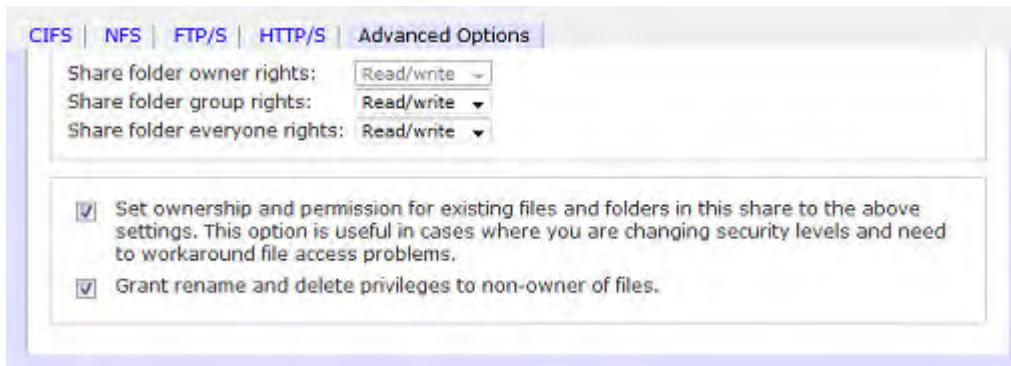


The following steps assume that you are using the updated IP address of 10.10.10.101 for the Netgear NAS. Also ensure your computer has a compatible IP address (for example, 10.10.10.103) and is on the same subnet as the Netgear NAS (for example, 255.255.255.0).

1. Open a web browser and navigate to the Netgear NAS web interface at `http://10.10.10.101:admin/`.
2. Log into the Netgear NAS.
Default user ID admin
Default password admin
3. Select **Shares > Share Listing**.
4. Select the icon under CIFS, NFS, FTP/S, or HTTP/S.



5. Switch to the **Advanced Options** tab.
6. Select the "Set ownership and permission..." and "Grant rename and delete..." checkboxes.



7. Click **Apply**.
 8. Open a web browser and navigate to the Netgear NAS web interface at <http://10.10.10.101/Content>.
 9. Log into the Netgear NAS.
 10. Select the `cinemalib` checkbox.
 11. Click **Delete**.
 12. In the confirmation dialog, click **OK**.
- The `cinemalib` file is deleted. The Netgear NAS is now ready to receive content for the GDC IMB.

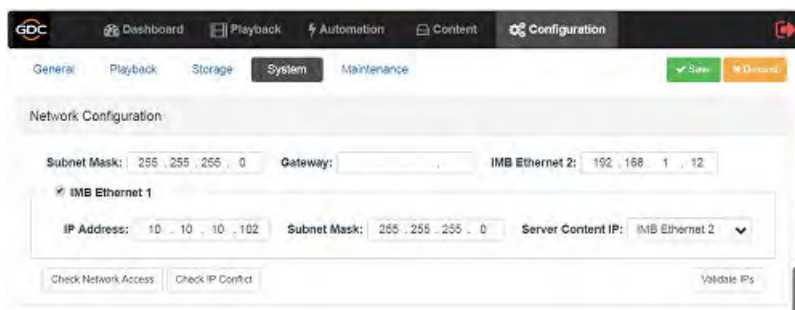
Configuring the ETH1 port on the GDC IMB

Connect the Netgear NAS to IMB Ethernet 1 port on the GDC IMB.



On the Netgear NAS, the default for the Ethernet 1 port is DHCP. The following steps assume that you are using the updated IP address of 10.10.10.101.

1. Using a Maintenance user level, log into the GDC Server web interface.
 2. Click the **Configuration** tab.
 3. Click the **System** tab.
 4. Under IMB Ethernet 1, configure an IP address compatible with the IP address of the Netgear NAS.
- The IP address of the IMB Ethernet 1 port must be different than the IP address of the Netgear NAS, but must be on the same subnet (for example, 10.10.10.102).
5. In the Server Content IP list, select **IMB Ethernet 2**.



6. To save the configuration, click **Save**.



To connect to the theater management network, use IMB Ethernet 2 port on the GDC IMB.

Configuring storage

Configure the GDC IMB to use the Netgear NAS as the storage device.

The following steps use the updated Netgear NAS IP address of 10.10.10.101 and the default share folder `/content`.

1. Using a Maintenance user level, log into the GDC Server web interface.
2. Click the **Configuration** tab.
3. Click the **Storage** tab.
4. Under IMB Storage, configure the following settings:

Storage Type	NAS
IP Address	10.10.10.101
NFSv3 Share	/content

5. Under Content Setting, set Priority to **IMB Storage**.
6. To save the configuration, click **Save**.
7. Click the **Dashboard** tab.
8. To reboot the GDC IMB, click **Restart**.

Files ingested by the GDC IMB are stored in the `/content` share folder on the Netgear NAS.

Verifying device communication

After the GDC IMB establishes a connection with the Netgear NAS, the available and total storage space on the Netgear NAS is displayed on the Dashboard.

1. On the GDC Server web interface, click the **Dashboard** tab.
2. Under Storage Information, confirm the storage usage.

Technical support

Technical support for Christie products is available at:

- North and South America: +1-800-221-8025 or Support.Americas@christiedigital.com
- Europe, Middle East, and Africa: +44 (0) 1189 778111 or Support.EMEA@christiedigital.com
- Asia Pacific: +65 6877-8737 or Support.APAC@christiedigital.com
- Christie Professional Services: +1-800-550-3061 or NOC@christiedigital.com