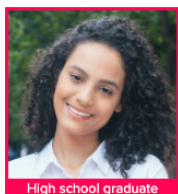




# THIS IS TALLO

Tallo is a free online platform and app that lets students showcase themselves and get discovered by colleges and companies everywhere.



Tina Smith

LAKESIDE HIGH - CALIFORNIA

CLASS OF 2020

3.2  
GPA

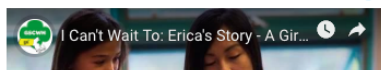
1250  
SAT

27  
ACT®

CAREER INTERESTS: Computer Scientists Mechanical Engineers

LANGUAGES: Spanish

## VIDEO



## EDUCATION

Past Schools

Cyber Academy Of South Carolina Graduated  
SC / USA

## HOW DOES IT WORK?

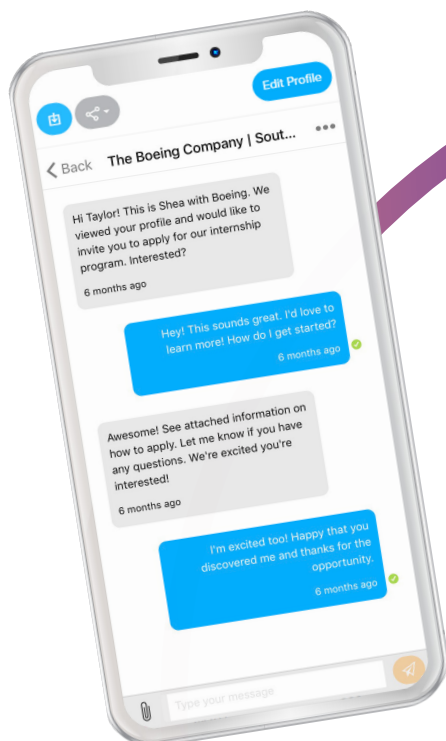
Students sign up and receive a student profile that they are able to fill out with their own specifics, such as:

- Activities
- Extracurriculars
- Work experience
- Test scores
- Accomplishments
- School courses

## WHY SHOULD THEY JOIN?

Colleges and companies are also on Tallo! They want to hire and recruit students for opportunities such as:

- Jobs
- College programs
- Apprenticeships
- Scholarships



## THE CONNECTION PIECE

Colleges and companies search through student profiles and direct message students. Why direct message?

- Preferred communication style for Gen Z
- Goes straight to student's phone
- Safe and monitored through platform
- Encourages student engagement

Questions? Visit [tallo.com](https://tallo.com) or contact us at [support@tallo.com](mailto:support@tallo.com) | 855-765-7836



# HOW TO JOIN TALLO

Follow the steps below to join Tallo, build your profile, and connect with opportunities.

## 1 GO TO TALLO HOMEPAGE

- Go to **tallo.com** and click **Sign Up**.
- Sign up with your personal email or Google.
- Click **Create Your Account**.

## 2 COMPLETE THE WELCOME FLOW

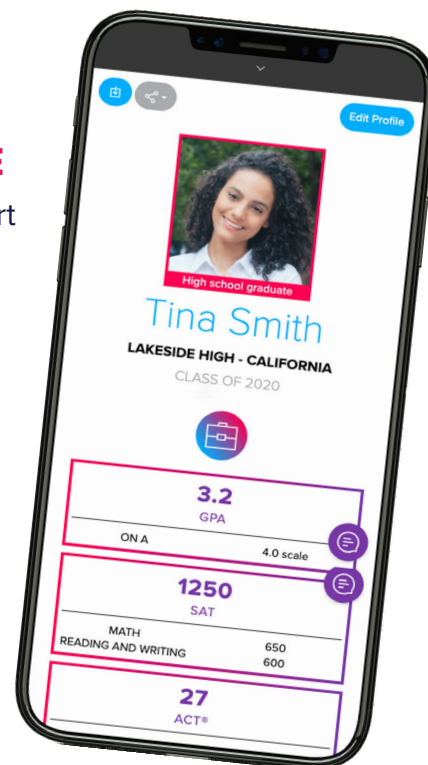
- Follow the steps on your screen to add profile basics.
- Can't find your school? Search by **zip code**.
- Make sure you **verify your email** — click the red envelope icon at the top of the screen after completing the welcome flow.

## 3 ADD MORE TO YOUR PROFILE

- Click **Profile** and select **Edit Profile** to start adding your information.
- Focus on VIP areas such as education info, accomplishments, extracurriculars, and experiences.

## HELPFUL ITEMS TO HAVE READY

- Awards received
- Projects or presentations to upload
- Videos of extracurriculars
- Recent courses and grades
- Earned certificates
- Standardized test scores (ASVAB, ACT WorkKeys, etc.)



Questions? Visit **tallo.com** or contact us at **support@tallo.com** | **855-765-7836**



# TALLO PROFILE BASICS

The profile sections below provide a good base for a student profile.

## PROFILE PICTURE

Choose a nice picture, similar to a yearbook photo, so colleges and companies can put a face to a name.

## NEXT STEP BADGE

Select an icon that indicates the plan for after high school. Colleges and companies can use this to target their search to find specific students.

## ALL ABOUT YOU

List awards, accolades, distinctions, or leadership roles to portray talent or mastery of a field.

Record hobbies, clubs, sports, volunteer projects, and/or social service to demonstrate teamwork, creativity, social skills, philanthropy, or compassion for others.

Reference jobs, internships, job shadows, conferences, subject-specific classes, or exposure to a certain field of work to show knowledge, expertise, work ethic, and responsibility.

The image shows a Tallo student profile with several sections highlighted by callouts:

- Profile Picture:** A circular callout around the student's photo.
- Next Step Badge:** A circular callout around the 'Next Step' badge, which is a graduation cap icon.
- All About You:** A large circular callout around the 'Accomplishments' section, which lists various awards and achievements.
- Career Interests:** A circular callout around the 'Career Interests' section, which lists interests like Computer Science and Engineering.

The profile also includes sections for Education, Digital Badges, Skills, Credentials, Geographic Preferences, Associations, Experience, and Files.



# NEXT LEVEL TALLO PROFILE

Add content to these additional profile sections to help make a strong, versatile profile.

**Tina Smith**  
LAKESIDE HIGH - CALIFORNIA  
CLASS OF 2020

**3.2** GPA  
**1250** SAT  
**27** ACT\*  
**1** ACT WORKKEYS\*  
**3** AP\*

**VIDEO**  
I Can't Wait To: Erica's Story - A Girl's Story

**DIGITAL BADGES**  
BRONZE ACT  
Imagine Academy  
hosa member

**CAREER INTERESTS**  
Mechanical Engineers

**SKILLS**  
Teamwork Leadership Problem Solving Collaboration  
Critical Thinking Cross-Cultural Skills

**CREDENTIALS**  
Adobe Photoshop Microsoft Office  
NCCCO Platinum Level CPR Certification

**GEOGRAPHIC PREFERENCES**  
California Delaware Georgia South Carolina

**ASSOCIATIONS**  
HOSA Future Health Professionals  
National Honor Society Girl Scouts of the USA  
National Technical Honor Society ACE Mentor Program of America

**COURSES**  
High School Courses  
Computer Science Principles (2017)  
Integrated Business Design (2018)  
PLTW - Intro to Engineering (2015)

**COLLEGE TRACKER**  
College  
Coastal Carolina University  
Charleston Southern University  
Oregon State University  
Jefferson University  
University of New Mexico-Main Campus  
College of Charleston

**INTENDED MAJORS**  
Computer Software Engineering  
Business Administration, Management And Operations  
Engineering Design

**PROJECTS**  
Capstone Project - Engineering  
Photography Project - South Carolina

## COLLEGE TRACKER

Choose unlimited colleges to signify interest and record status of application

## FILES

Upload different file types to create an accessible portfolio.

## VIDEOS

Use personal YouTube or Vimeo files to feature projects, personal statements, or artwork.

## COURSES

Highlight classes that pertain to career choice or future field of study.

## DIGITAL BADGES

Request badges directly from clubs and organizations to verify involvement.



Questions? Visit [tallo.com](https://tallo.com) or contact us at [support@tallo.com](mailto:support@tallo.com) | 855-765-7836



# SUCCESS WITH TALLO

## PARTNERS

Tallo has formed **national partnerships** with some of the leading organizations and associations in the country.



## COLLEGES AND COMPANIES

A growing list of **college and companies** have joined Tallo to showcase what they're all about and connect with talent.



## SUCCESS STORIES

*"Tallo allowed me to find several scholarships that I have applied for!"*

**McKenzie Myers**

Clemson University Student

*"Thank you for allowing me to participate in this once in a lifetime opportunity. I sincerely appreciate the interest and potential that you found in me. The STEM Signing Day experience has changed my perspective of myself and my outlook on life. I love the Tallo organization and all that it has to offer. I would do anything to further promote this program."*

**Tre'zjon Bell**

West Ashley High School Graduate  
STEM Signing Day participant

*"Through the Tallo program I was able to find a small school with excellent science programs. At SWU, I am able to learn about all of the biological details I love while integrating faith into my education!"*

**Aradaryn Singleton**

Southern Wesleyan University

*"I have found the college I want to go to through this site. I have explored my opportunities and learned from Tallo."*

**Kiara Mercer**

Westwood High School Alumnus



# LET'S TALK TALLO

## WHAT IS TALLO?

Tallo (formerly STEM Premier) is an online platform that connects students with opportunities. The Tallo app assists students and young people in designing a career pathway, educators in recruiting top talent to their schools, and employers in developing a stable, continuous talent pipeline. Students (ages 13+) and professionals showcase their skills and abilities in their online profile, connect directly with companies and colleges looking for the next generation of talent, and match with over \$20 billion in scholarships.

## IS TALLO SAFE?

Yes. Tallo is committed to protecting users' privacy and provides a safe, secure user experience. Learn more in our Privacy Policy and our Terms of Use, which are both available on Tallo.com. Everything on Tallo is both FERPA and COPPA compliant. All users must be over the age of 13. Users enter all information on their own - no one else may enter information into a user's profile other than the owner of that account.

## WHAT IS A STUDENT PROFILE?

A student profile is a digitally interactive, self-directed page that allows users to stand out to colleges and companies. The premise is to level the playing field between students and allow individuals to highlight their strengths.

## HOW DOES A STUDENT PROFILE WORK?

Students create free digital profiles to showcase their talents, discover resources and scholarships, receive guidance and coaching, and connect with colleges and companies. Talent Seekers (verified colleges and companies) can view users' profiles, micro target with specific search filters, track top-level analytics, and recruit candidates directly via internal messaging.

## WHAT IS A STUDENT DASHBOARD?

The student dashboard is the first thing a student sees when they log in their Tallo account. The dashboard provides an analytical breakdown of their test scores and level of profile completion, visible only to the user. Additional features allow the user to explore various career assessment tools, posted opportunities such as scholarships and events, and companies' profiles. The dashboard also houses the scholarship matching engine Red Kite and displays the current dollar amount the user qualifies for, as well as a "match score" that indicates how well the student matches up with current scholarship opportunities.





# ONBOARD STUDENTS

Here are some different ways to help students create Tallo accounts.

## TALLO-LED ROLLOUT

There are three ways a Tallo Rep can help onboard students:

Option 1: By grade level

Option 2: By discipline

Option 3: With whole school

## TEACHER-LED ROLLOUT

Request materials to onboard students at a self-appointed time. Rollouts can be structured three ways:

Option 1: Over one class period or full session

Option 2: Incrementally over a semester or school year

Option 3: Incorporated into school or course curriculum

## WHAT IS A ROLLOUT?

During a rollout students sign up for Tallo and complete the majority of their profile in one session.

It's helpful to have someone directing the rollout to both educate about Tallo as well as guide students through profile creation and completion.

Recommended rollout time is around 45-60 minutes (15 minutes for training and 30+ minutes for profile set-up).

## AVAILABLE MATERIALS

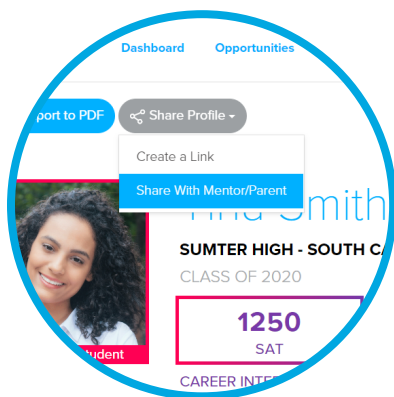
Customize students' onboarding experience with these materials:

- Conceptual Videos
- Lesson Plans
- Technical Manual
- Tallo Teach Reps
- YouTube & Tallo Tips



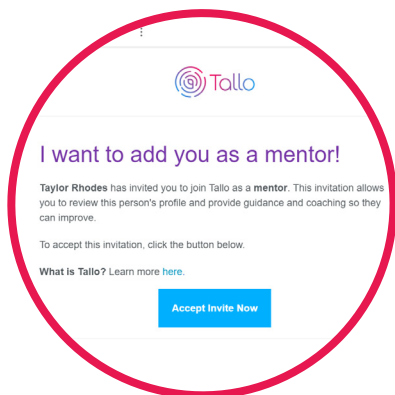
# HOW TO BECOME A MENTOR

Students are able to share view-only copies of their profiles with mentors such as parents, coaches, or teachers who can assist them in putting their best face forward.



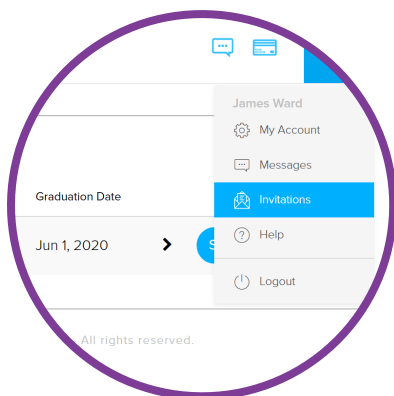
## 1 STUDENT SHARES PROFILE

- Student clicks **Share Profile** above profile picture and selects **Share With Mentor**.
- Student enters mentor email address and selects **Send Invitation**.



## 2 ACCEPT EMAIL INVITATION

- Mentor opens email invitation and selects **Accept Invite Now**.
- Type your name and create a password.
- Select **Create Your Account**.
- You will receive view-only access of the student's Profile and Dashboard.



## 3 MANAGE MENTOR INVITATIONS

- To accept additional student mentor invitations, select **Invitations** from the drop-down menu at the top-right of the page.
- Students can add multiple mentors and mentors can accept multiple invitations every time you log in.

### NOTE

A mentor cannot have more than one account on Tallo. If another account has already been created using the same email address, the connection will not be made.

If this is the case, we will need to be notified to remove the account that you wish to delete and free up your email address for the mentor account.